

DESIGN INTENT



DNA™ COIL

TECH SPECS

COVERSTOCK

EXO™ Pearl Reactive

WEIGHT BLOCK

Supercoil™ Core

FACTORY FINISH

Reacta Gloss™

BALL COLOR

Scarlet / Persian Blue / Raven

FLARE POTENTIAL

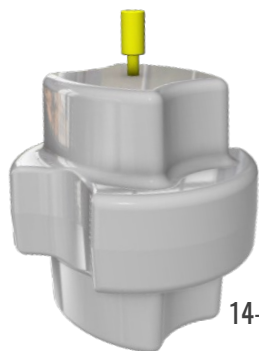
High

FRAGRANCE

Orange Pineapple Slush



PREMIER™



14-16 lb.

LBS	RG	DIFF	INT. DIFF
16	2.47	0.050	0.021
15	2.47	0.053	0.023
14	2.53	0.048	0.020
13	2.57	0.032	0.010
12	2.59	0.029	0.008



12, 13 lb.

A great coverstock simply goes to waste unless paired with the right core for the job at hand. EXO Reactive was created for the slickest of slicks, but sometimes a cleaner look is required. That's why EXO Pearl was chosen and made brilliant with our lustrous Reacta Gloss finish. The DNA Coil complements its predecessor, the DNA, perfectly. Because its chemical friction and porosity is still greater than the average bowling ball, no unexpected over/under reactions will be happening here. EXO Pearl provides length with room for forgiveness because it reads the midlane better than most other pearls. Adjusting between two balls has never been easier. Use the same layout on your DNA Coil as your DNA and expect the same early-revving action, but with a longer, more angular ball motion we all look for as the lanes start to break down. The Supercoil Core has a substantial amount of mass built around its equator. This drives the RG down and enables the ball to better read the midlane. This allows the ball to start its hook before the end of the pattern, which is what every professional in the world demands.