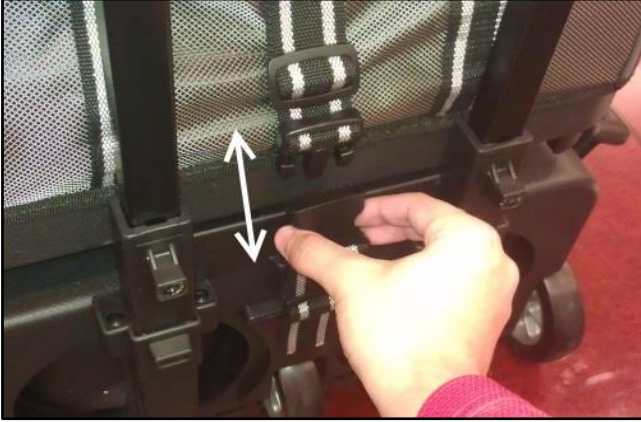


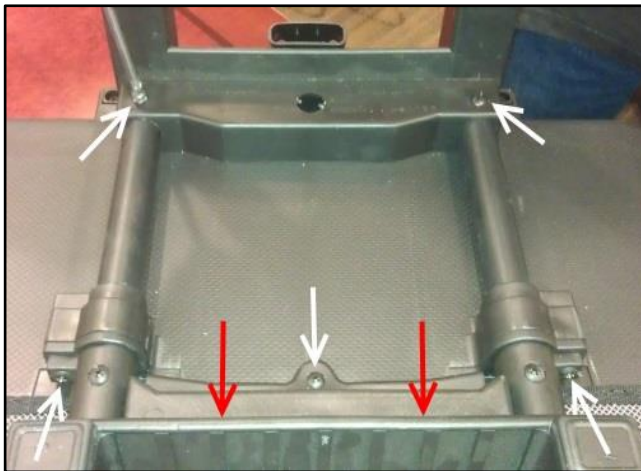


Storm 4-Ball Rolling Thunder™ Handle Replacement Instructions

Step 1. Making sure the strap clip is undone, remove the top bag from the bottom bag.



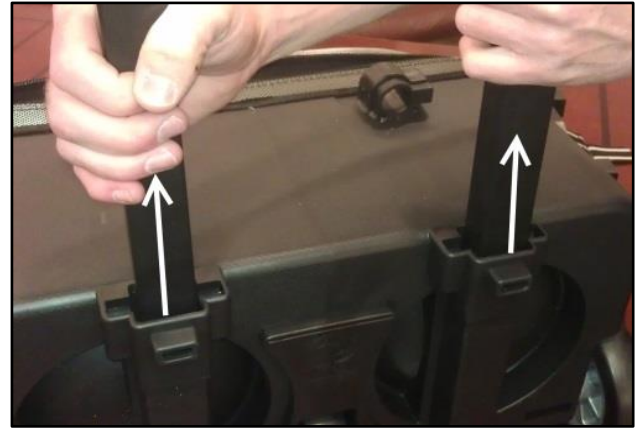
Step 2. Remove the bottom bag rack screws, (5) total. Slide the rack away from handle.



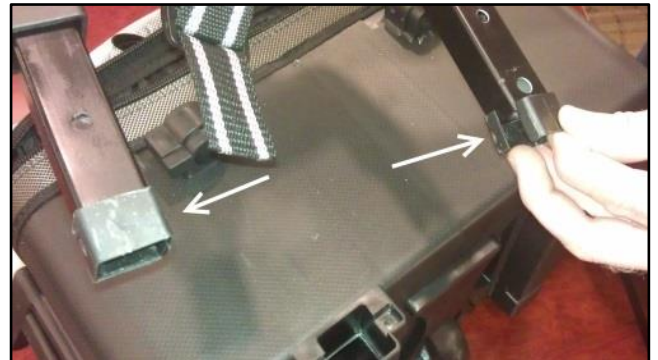
Step 3. Take screws out of handle, (4) total.



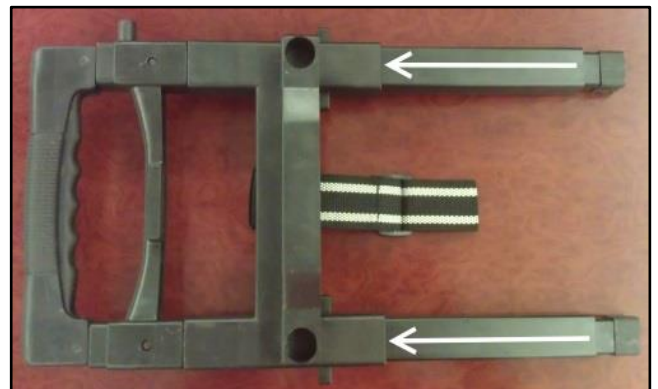
Step 4. Pull entire handle assembly out of the bottom bag base/frame. Make sure the square outer sleeves are also removed.



Step 5. Save the intermediate wrapped sleeves that are on the bottom rails. These are very important and **MUST** be on the replacement handle in order for both locking stages to work.



Step 6. Make sure the replacement handle is fully collapsed and that the outer sleeves are pushed all the way up into the handle. **NOTE:** it will take some adjusting to get the sleeves to fit into the square openings.



Step 7. Slide the handle into the bag base slots making sure the strap side is facing away from the bag. Tap the frame lightly with a hammer until the screw housing is flush with the molded frame.



Step 8. Replace the (4) screws from step 3. NOTE: If the screws are all the way in but keep spinning or don't get tighter, this is ok and can be left alone.

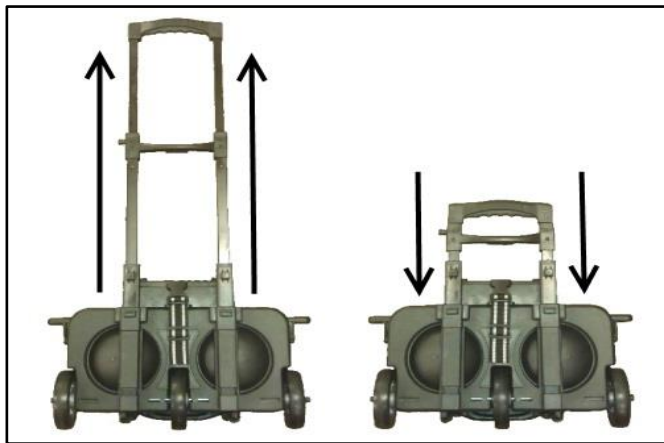


Step 9. Slide the bottom bag rack into place.

NOTE: It will take some taps with the hammer and alignment to get it fully into place, and the holes for the screws must line up with the holes on the rack.



Step 10. Test handle to make sure it fully extends and retracts. Also make sure it locks in the extended position.



**ANY QUESTIONS, PLEASE CALL OUR TECHNICAL CUSTOMER SERVICE AT
(800)369-4402 OR (435)723-0403**