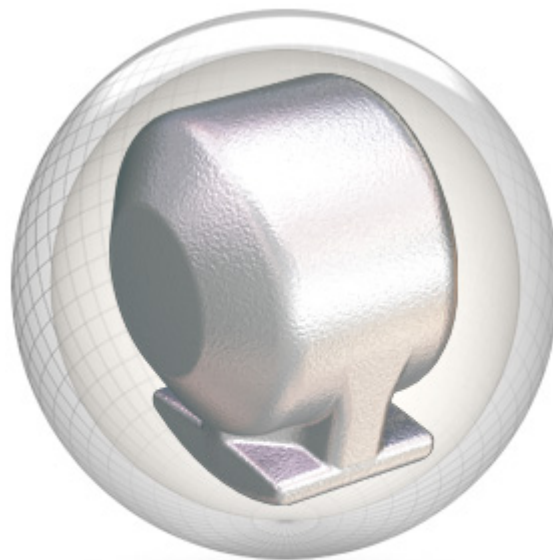


Vivid™



COVERSTOCK: NRG™ Solid Reactive

WEIGHT BLOCK: M.A.D.™ Core

FACTORY FINISH: 2000-grit Abralon®

BALL COLOR: Black/Blue/Green

DUROMETER: 73-75 Rex D-scale

FLARE POTENTIAL: 6" Plus (High)

FRAGRANCE: Wild Mint Leaf

WEIGHTS: 12-16 lbs.

Lbs.	RG	Diff.	Intermediate Diff.
16	2.50	0.055	0.019
15	2.52	0.050	0.017
14	2.55	0.045	0.014
13	2.57	0.032	0.010
12	2.59	0.029	0.008

Resurfacing to a 2000-grit Factory Finish

Resurface to the original factory finish using a ball spinner.

1. 360-grit Abralon® - Sand for 30 seconds on all four sides with light pressure.
2. 2000-grit Abralon® - Sand for 10 seconds on all four sides with light pressure.

Storm recommends using the suggested cleaner/polish daily. Storm also recommends touching up the surface with only the final step every 20 games and resurfacing completely every 30-50 games.



Use Reacta Clean™ Reactive Cleaner after every session.